

# Delay On Make (Operate) TMV8000/TSU2000 Uni-Timer Timing Module



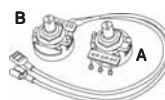
TMV8000



- Operates From 24 ... 240 V AC/DC
- Knob or External Adjust Time Delays
- Delays from 0.1 ... 8 m
- Totally Solid State - Encapsulated
- 1 A Steady - 10 A Inrush
- Two Terminal Series Connection with Load

Approvals:

## Accessories



External adjust potentiometer  
P/Ns:  
**P1004-12** (fig A)  
**P1004-12-X** (fig B)



Mounting bracket  
P/N: **P1023-6**



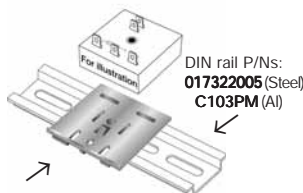
Female quick connect  
P/N:  
**P1015-64** (AWG 14/16)



Quick connect to screw adaptor  
P/N: **P1015-18**



Versa-knob  
P/N: **P0700-7**



DIN rail adaptor  
P/N: **P1023-20**

See accessory pages for specifications.

## Description

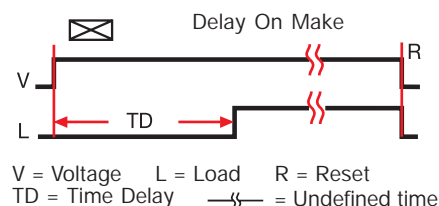
The TMV and TSU Series are universal voltage delay on make timers. Two models cover all the popular voltages and time delays. Available with knob or external adjust time delay. Its simple two terminals can easily be connected in series with a relay coil, contactor coil, solenoid, lamps, small motor, etc., to delay their energization, prevent short cycling or to sequence on various loads.

## Operation

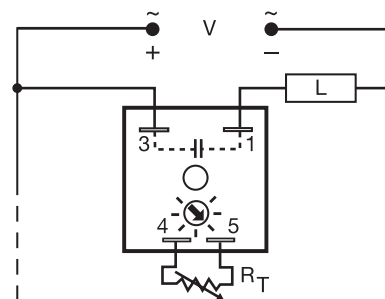
Upon application of input voltage, the time delay begins. The output is de-energized before and during the time delay. At the end of the time delay, the output energizes and remains energized until input voltage is removed.

**Reset:** Removing input voltage resets the time delay and output.

## Function



## Connection



Load may be connected to terminal 3 or 1.  
TMV has knob adjustment.  
TSU has external adjustment terminals 4 & 5.

## Ordering Table

Input	Time Delay	Adjustment	Part Number
24 ... 240 V AC/DC	5 ... 480 s	External	TSU2000
24 ... 240 V AC/DC	0.1 ... 8 m	Knob	TMV8000

# **Delay On Make (Operate)** **TMV8000/TSU2000 Uni-Timer** **Timing Module**

## **Technical Data**

<b>Time Delay</b>	
Type	Analog circuitry
Range	5 ... 480 s (TSU2000) 0.1 ... 8 m (TMV8000)
Repeat Accuracy	+/-2%
Tolerance (Factory Calibration)	≤ +/-10%
Reset Time	≤ 100 ms
<b>Input</b>	
Voltage	24 ... 240 V AC/DC +/-20%
Line Frequency	50 ... 60 Hz
<b>Output</b>	
Type	Solid State
Form	Normally Open, open during timing
Maximum Load Current	1 A steady state, 10 A inrush at 55°C
Minimum Holding Current	≤ 40 mA
Voltage Drop	≅ 2.5 V at 1 A
<b>Protection</b>	
Circuitry	Encapsulated
Dielectric Breakdown	≥ 2000 V RMS terminals to mounting surface
Insulation Resistance	≥ 100 MΩ
<b>Mechanical</b>	
Mounting	Surface mount with one #10 (M5 x 0.8) screw
Package	2 x 2 x 1.21 in. (50.8 x 50.8 x 30.7 mm)
Termination	0.25 in. (6.35 mm) male quick connect terminals
<b>Environmental</b>	
Operating Temperature	-20°C ... +70°C
Storage Temperature	-30°C ... +85°C
Humidity	95% relative, non-condensing
Weight	≅ 2.4 oz (68 g)

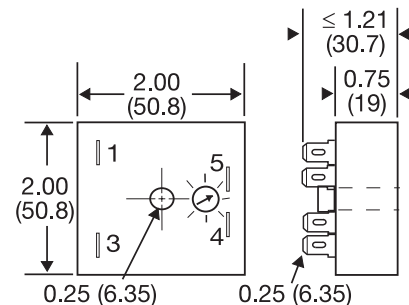
5

## **TSU2000**

<b>R<sub>T</sub> Selection Chart</b>	
<b>Time Delay*</b>	
<b>Seconds</b>	<b>R<sub>T</sub> Megohm</b>
5	0.0
85	0.5
163	1.0
240	1.5
320	2.0
400	2.5
480	3.0

\* When selecting an external R<sub>T</sub> add at least 20% for tolerance of unit and the R<sub>T</sub>.

## **Mechanical View**



Inches (Millimeters)

TMV has the knob and dial.  
TSU has terminals 4 & 5.